



DEKO 190
Washer-disinfector for
human waste containers





MEETING THE STANDARDS

The DEKO 190 is designed and constructed to meet the standard performance and design requirements stated in ISO 15883-1 Washer-disinfectors - General requirements and in ISO 15883-3 Requirements and tests for washer-disinfectors employing thermal disinfection for human waste containers, together with, the Safety requirements stated in IEC 61010-2-045: Particular requirements for washer-disinfectors used in medical, pharmaceutical, veterinary and laboratory fields.

The DEKO 190 is intended for emptying, flushing, cleaning and thermally disinfecting by steam, human waste containers intended for re-use such as;

- ◆ bedpans and lids
- ◆ supports for disposable single-use bedpans
- ◆ patient wash bowls
- ◆ urine bottles
- ◆ mop buckets
- ◆ suction bottles
- ◆ measuring jugs
- ◆ kidney dishes
- ◆ and all other reusable products used for similar purposes within patient care

Process results are guaranteed throughout:

- ◆ water pressure for washing is supplied by a high powered 600L/min recirculation pump.
- ◆ detergent is injected into the re-circulated wash water by the automatic integral dosing system. The unique working principle facilitates cleaning and steam disinfection of the entire system including wash chamber, water tank and drain outlet with the minimum usage of water and energy.
- ◆ the steam disinfection phase is generated by the integrated non-pressurized boiler and is directed through the water tank, outlet and internal pipework.
- ◆ easy programmable wide selection of disinfection temperatures and cycle setups to secure the microbial inactivation impact.

Cycles can be modified to meet almost any special requirement, though the standard requirements are met with the fixed, tested and approved cycles pre-programmed by the manufacturer. The access code system protects any unauthorized changes to the set parameters.

The washing spray patterns are delivered through 3 rotating + 8 fixed spray jets guaranteeing contact with all surfaces and crevices of items with varying design.





LARGE CAPACITY

DEKO 190 has a large wash chamber and capacity for automatic emptying and processing of 2 bedpans with lids and 4 urine bottles simultaneously. The integrated drop down shelf provides space for 4 hand wash basins or a mop bucket with seating ring. The shelf can also be utilised as a base to accommodate and process inserts and washing accessories e.g. kidney dishes, bowls, vases, toilet brushes / holders, as well as, various hollowware. Using optional holders and baskets enables the correct positioning and easy loading of various items, eg; suction jars & medicine pots, and extends the DEKO 190's capacity and versatility.

SAFE AND SECURE

The door is locked securely throughout the cycle. A green indicator will advise when the door is unlocked for opening. An audible indicator may be added to draw attention to the ending of the cycle.

In order to guarantee that the values of the critical process variables were truly obtained and as programmed, the Deko 190 is equipped with the verification level A – independent temperature verification sensor.

Cleaning efficacy is increased by dosing automatically the precise pre-determined volume of detergent at the correct time of the wash cycle. The detergent container is safely positioned into the easily accessible housing. The intelligent control system monitors the washing pressure constantly and secures the achievement of the pre-set process values.

A low level detecting system will illuminate the red indicator to warn when the detergent volume is running low.

QUIET, EFFICIENT AND RELIABLE

The DEKO 190 occupies its space efficiently. One unit requires only W600xD630 mm of floor space. Connections to water, electricity and drain are provided with all necessary safety features. Regular control & maintenance of the machine is made quick and easy by the service mode of the microprocessor and the easily accessible components. Water is taken into the chamber from the integrated water tank. User and Maintenance Manuals include all relevant details and instructions required. Any information, advice, personnel training and service calls are attended to with the utmost dedication and urgency. Availability of spares is guaranteed for a minimum of 10 years after date of shipment and the complete programme and software lodged securely with an independent body.

Durability and reliability in continuous, heavy and busy institutional operating circumstances have been the key factors in the design of the Deko 190.





Please note the height of model with type A air gap H1460 mm.

SUMMARY OF FEATURES

- ♦ overall dimensions; W600xD630xH1300 ±10 mm
- ♦ wash chamber dim. W480xD360xH640 mm
- ♦ holder for 2 bedpans
- ♦ water jet nozzles for 4 urine bottles
- ♦ fold-down wire shelf for various re-usable items
- ♦ in-built steam generator
- ♦ powerful re-circulation water pump, output 600 L/min
- ♦ framework, panels and wash chamber all made of stainless steel
- ♦ fully automatic microprocessor control
- ♦ independent temperature verification sensor and indicator
- ♦ cycle selection & start keys
- ♦ in-process indication
- ♦ cycle & phase info
- ♦ cycle complete indication: a green led
- ♦ fault indication: red flashing led
- ♦ multi-level access code system with special codes for: maintenance, authorised person
- ♦ secure, tested cycle files with denied access
- ♦ customised cycles
- ♦ component test mode
- ♦ 3 rotating + 8 fixed wash jets
- ♦ Integrated automatic detergent dosing system
- ♦ low level of detergent indication
- ♦ compartment for the process chemical container
- ♦ entry port for test temperature sensor leads
- ♦ load temperature protection and over temperature cut-outs
- ♦ automatic foam and washing water pressure control system
- ♦ opaque cold and hot water connection hoses ½" BSP
- ♦ drain outlet diameter 90-100 mm
- ♦ sound and heat insulated
- ♦ vapour condenser
- ♦ height adjustable feet
- ♦ back syphon Type 'A' air gap protection, where required (Note national requirements)

Options:

- ♦ lockable door for chemical container compartment
- ♦ descale dosage pump for steam generator
- ♦ audible cycle end alarm

ACCESSORIES



1. 381170 Utensil basket with a lid
- dim. 340x250x200 mm

2. 381220 Instrument tray 250 x 170 x 70 mm
381221 Lid 250 x 170 mm
381210 Instrument tray 340 x 250 x 70 mm
381211 Lid 340 X 250 mm
381200 Instrument tray 450 x 340 x 70 mm
381201 Lid 450 x 340

3. 381685 Kidney dish rack, 6

4. 381515 Peg rack, 12

5. 381450 Shoe rack, 4 pairs

6. 381680 Insert for 4 urine bottles

7. 381690 Suction bottle rack
• as per given dimensions

8. 381692 Tipping suction bottle insert, 2
• as per bottle dimensions

9. 381682 Hose rack , 6

10. 381683 Insert for Oras shower handles and hoses
• 4 handles and hoses



TECHNICAL DATA

Model	Deko 190
Outer dimensions, mm:	
Width	600
Depth	630
Height (* H150mm legs). See below.	1460/*1610
Weight kg	130
Weight lbs	287
Gross wash chamber volume L	72
Inner dimensions mm:	
Chamber height	640
Chamber width	480
Chamber depth	360
Water volume / one cycle phase, excl. disinf. L	
	9
Electricity (1.)	
240/400V 3N 50Hz 7.5kW 16A or, 240/400V 3N 50Hz 6.6kW 10A or, 120/208V 3N 60Hz 6.6kW 19A Available as 1N at request. Further details at request.	
Capacity & effects:	
Heating power kW	6.6 or 7.5
Circulation pump 600L/min, kW	1.5
Outlet size diameter in mm (4.)	90/110
Cold water hose L=2 m (2.)	R1/2"
Hot water hose L=2 m (3.)	R1/2"
Min/Max water pressure, bar	1/8
Min/Max water pressure, psig	15/115
Min/Max steam supply (S-model only), bar	1-3
Min/Max steam supply (S-model only), psig	15-45
Steam hose L=1,2 m (S-model only) (5.)	R1/2"
Condense L=1,2 m (S-model only) (6.)	R1/2"
Detergent container housing (7.)	

Models:

- ♦ electrically heated = Deko 190E
- ♦ steam heated = Deko 190S
- ♦ manual door

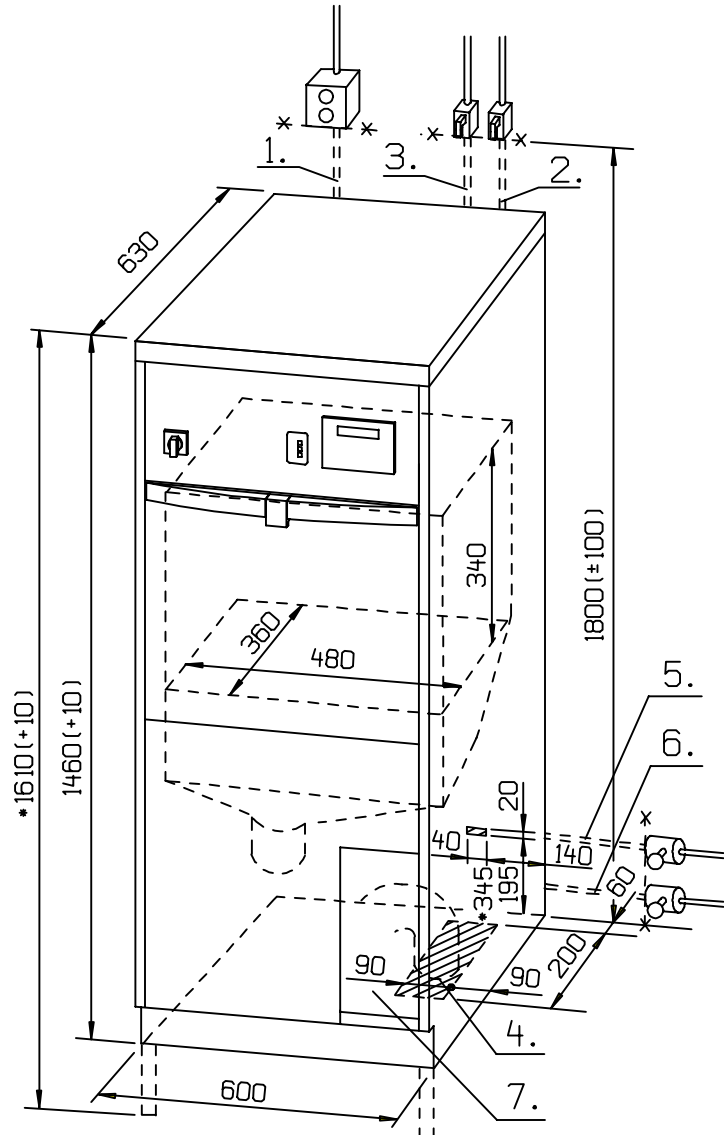
Included as standard:

- ♦ holder for 2 bedpans
- ♦ 4 urine bottle nozzles
- ♦ wash shelf
- ♦ detergent pump

Certificates / tests / approvals:

ISO 14001:1996
ISO 13485
SIS TR-3:2002
ISO EN 15883-1, 15883-3
IEC 61010-1
IEC 61010-2-045
IEC 61326-1

CE 0537



Height as standard 1300 mm. Available with +150 mm higher legs. Type A air gap model height 1460 mm. Available also with +150 higher legs.

FRANKE

Manufacturer:
Franke Finland Oy
Vartiokuja 1
FIN-76850 Naarajärvi
Finland

Telephone +358 15 34111
Faz +358 15 3411 560
www.franke.fi